

What's new in



PolyWorks

DataLoop™ 2023

Data Management &
Digital Connectivity
Solutions



Interconnect PolyWorks | DataLoop™ to your corporate identity server

Identity servers are the key components of IT infrastructure that store user credentials and authenticate user access. PolyWorks® now supports Azure AD and the SAML 2.0 authentication protocol to interconnect the PolyWorks | DataLoop data management solution to your corporate identity server, empowering your organization to:

- Easily share 3D measurement data internally by implementing single sign-on enterprise-wide
- Enable concurrent engineering and accelerate the root-cause analysis of assembly issues by allowing external suppliers to save their 3D measurement data into your database
- Deliver 3D measurement data and results digitally to customers or service partners

innovmetric

Manage a large number of inspections from your production

Store up to one million measured pieces sampled from a production line within a single inspection project and:

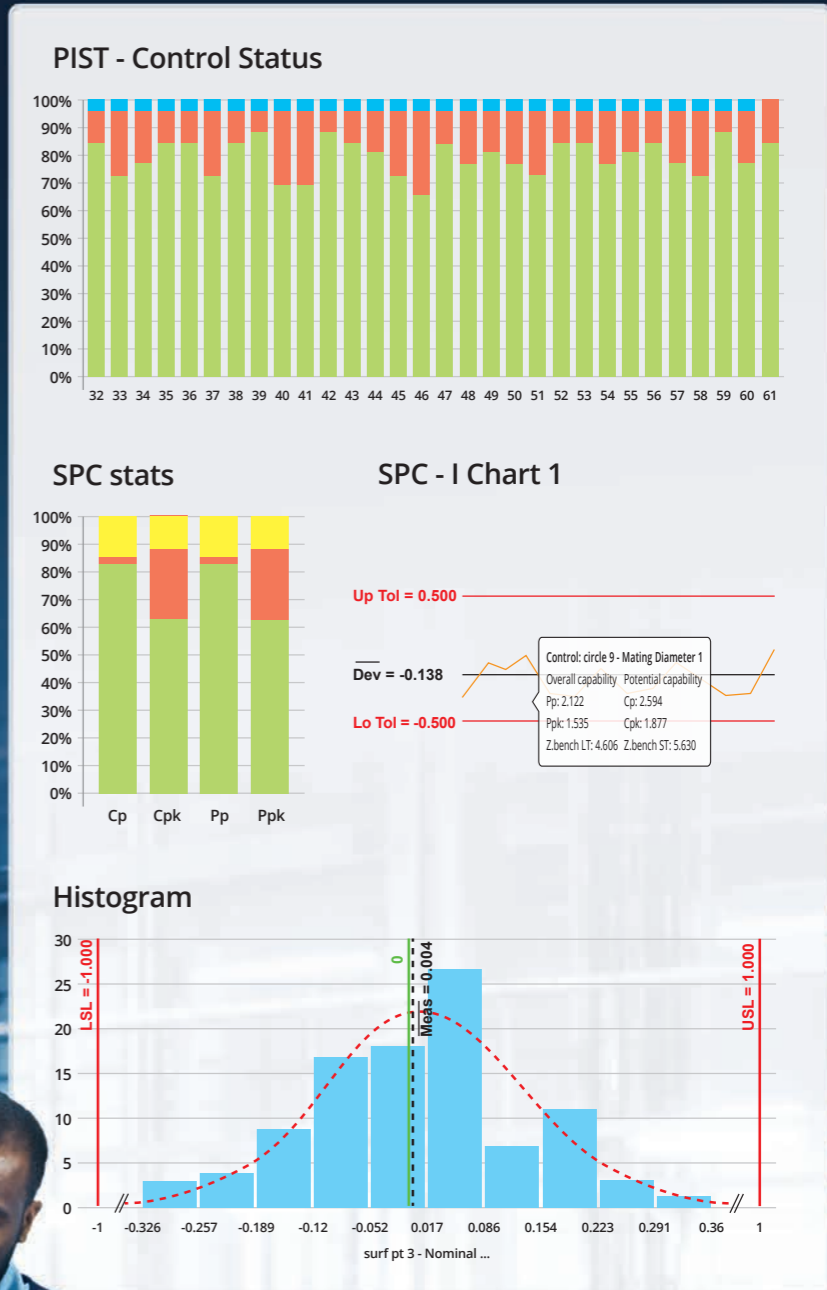
- Search and open any measured piece as quickly as if it was the last one measured
- Monitor dimensional trends over a longer time span



Monitor your production's dimensional trends at a glance

Display hundreds of charts at once and:

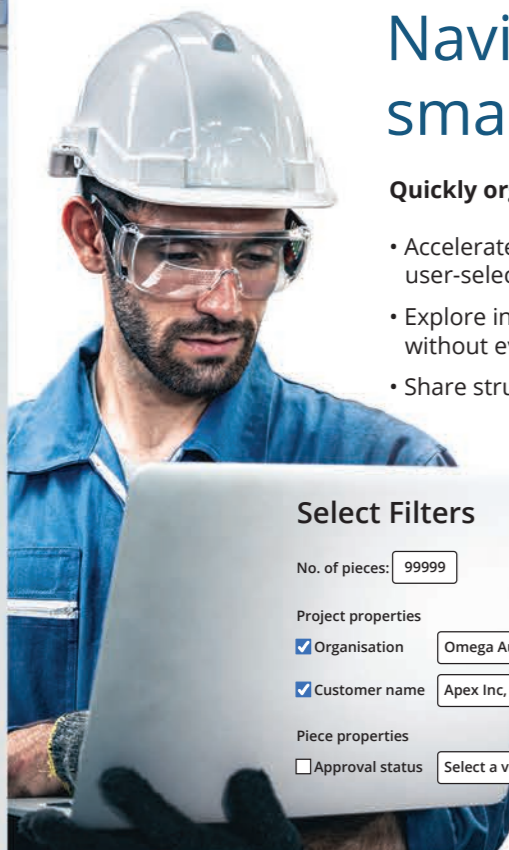
- Track the status of all measurements simultaneously
- Visualize the global performance of the complete inspection



Navigate inspection data using smart catalogs

Quickly organize search results into logical categories:

- Accelerate searches by displaying inspection projects in a meaningful hierarchy, based on user-selected metadata
- Explore inspection results efficiently by reviewing properties, statistics, alerts, and reports without ever opening projects
- Share structured search results with colleagues through hyperlinks



Select Filters

No. of pieces: 99999

Project properties

Organisation Omega Autom...

Customer name Apex Inc, Ace...

Piece properties

Approval status Select a value...

▼ Omega Automotive

★ Favorites only

▼ Apex Inc

Project	Workspace	Organization	Customer	Part number	Part name
G1-67F82-Bpillar-R	G1-67F82-ACT-Bpillar	Omega Automotive	Apex Inc	4962	B_Pillar

▼ Apex Inc

Project	Workspace	Organization	Customer	Part number	Part name
RL4_COV_54249_LH	RB_Testing_Sandbox	Omega Automotive	Apex Inc	54249344_LH	COVER LH
RL4_COV_54249_LH	RB_Testing_Sandbox	Omega Automotive	Apex Inc	54249344_LH	COVER LH

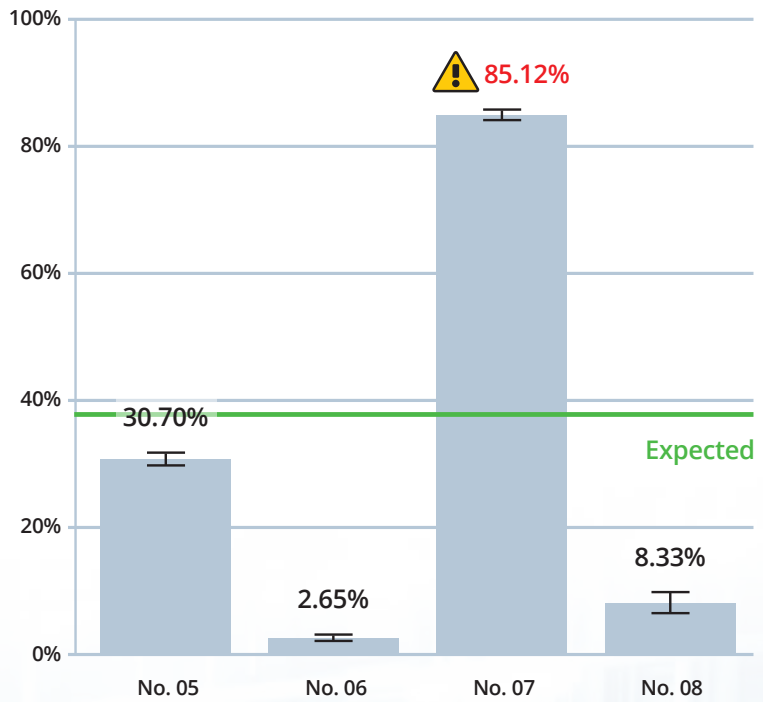


Resolve manufacturing failures faster

Automatically find the root causes of issues by performing statistical analyses of associations and:

- Identify the factors that truly impact production quality
- Review results presented in plain language with clear graphical aids
- Ensure valid results through adequate sampling

Failure rate



Corporate Headquarters:

innovmetric

InnovMetric Software Inc.
1-418-688-2061
info@innovmetric.com

© 2023 InnovMetric Software Inc. All rights reserved. PolyWorks® is a registered trademark of InnovMetric Software Inc. InnovMetric, PolyWorks | Inspector, PolyWorks | Modeler, PolyWorks | Talisman, PolyWorks | Reviewer, PolyWorks | DataLoop, PolyWorks | PMI+Loop, PolyWorks | AR, PolyWorks | ReportLoop, and "The Smart 3D Metrology Digital Ecosystem" are trademarks of InnovMetric Software Inc. All other trademarks are the property of their respective owners.

Subsidiary Office:

polyworks
europa

France | Phone: +33 (0)1 30 79 02 22 | infofrance@polyworkseuropa.com
Italy | Phone: +39 0573 1812250 | infoitalia@polyworkseuropa.com
Spain & Portugal | Phone: +34 935 220 264 | infoespana@polyworkseuropa.com
Czech Republic | Phone: +420 605 840 121 | infocez@polyworkseuropa.com
www.polyworkseuropa.com